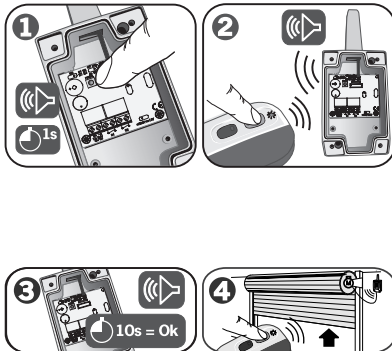


## PROGRAMACIÓN MANUAL / MANUAL PROGRAMMING



### DATOS TÉCNICOS

#### TECHNICAL DATA

Freq. 868,35MHz  
3Vdc CR2032 / 12m A  
Radiated power <25m W  
Temp. -20°C - +55°C



COD. 1246013 / 1.1

**DECLARACIÓN DE  
CONFORMIDAD CE  
EC DECLARATION OF  
CONFORMITY**

[www.jcm-tech.com](http://www.jcm-tech.com)